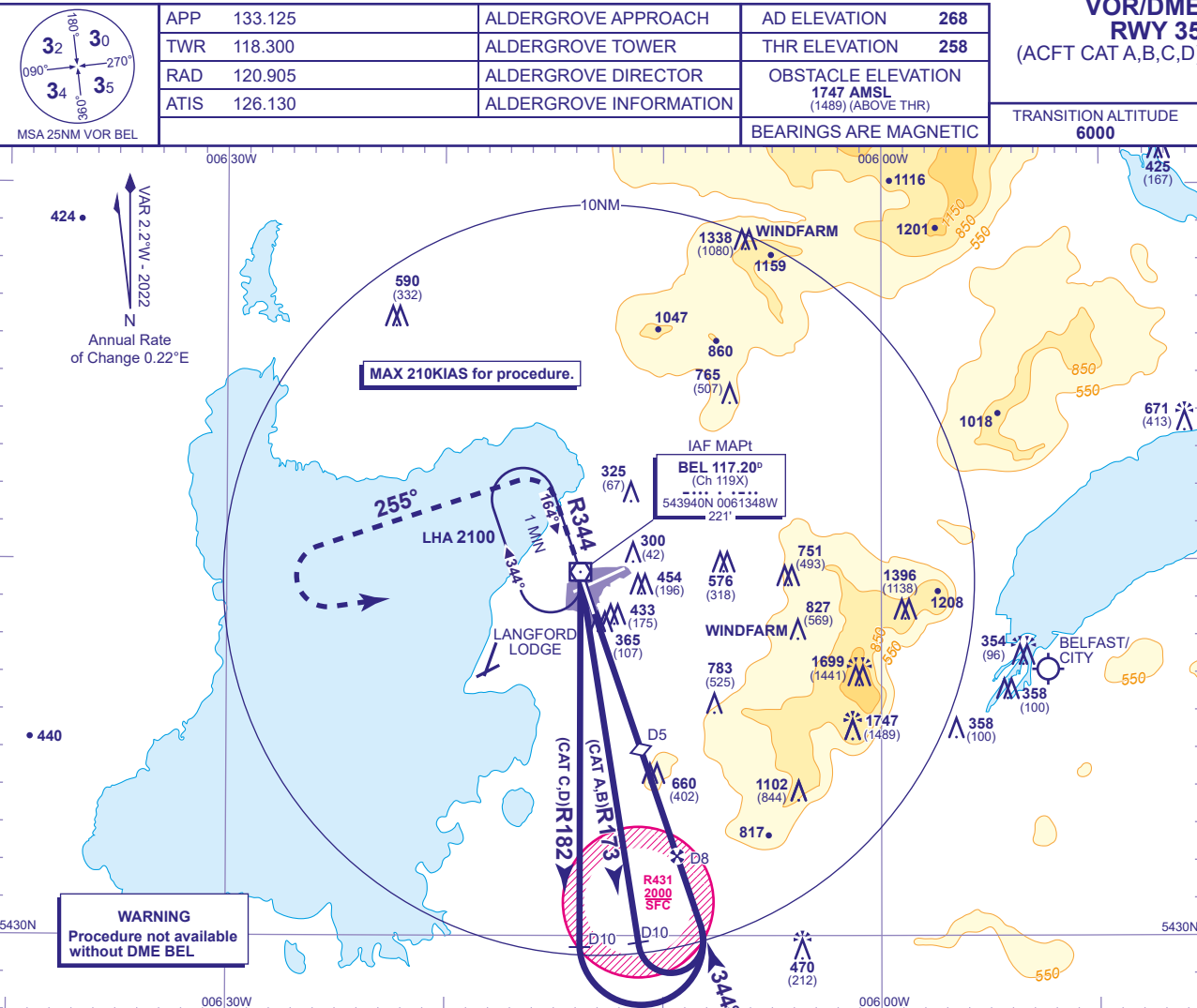
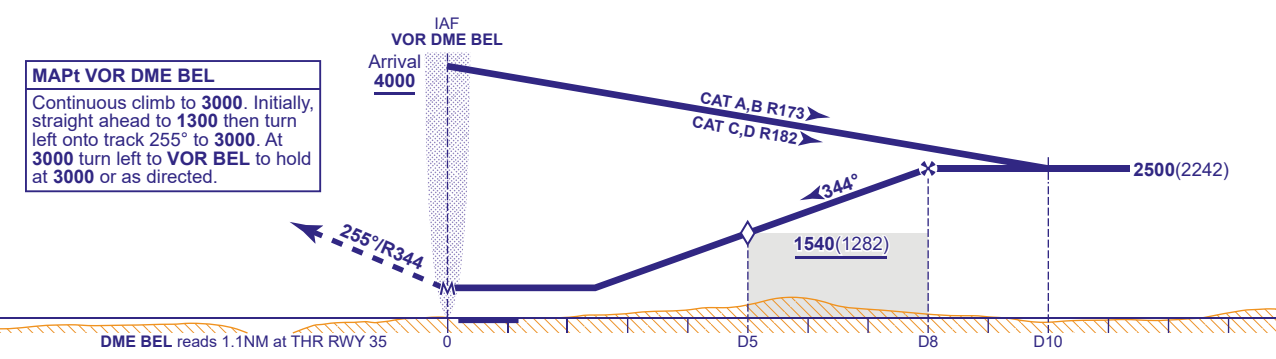


INSTRUMENT APPROACH CHART - ICAO

BELFAST ALDERGROVE
VOR/DME
RWY 35
(ACFT CAT A,B,C,D)



RECOMMENDED PROFILE Gradient 5.28%, 321FT/NM					
DME BEL	7	6	5	4	3
ALT(HGT)	2180(1922)	1860(1602)	1540(1282)	1220(962)	900(642)



Aircraft Category		A	B	C	D	Rate of descent	G/S KT	160	140	120	100	80
OCA (OCH)	Procedure	760(502)	760(502)	760(502)	760(502)		FT/MIN	860	750	640	530	430
VM(C)OCA (OCH AAL)	Total Area	750(482)	840(572)	1180(912)	1290(1022)							

NOTE Aircraft will normally be required to hold not lower than 3000 at VOR BEL.

CHANGE (1/25): BEL VOR RECALIBRATED. TRACKS/RADIAL. BEL VOR/DME HOLD.